



东莞中力仪器科技有限公司

ZhngLi Instrument Technology Co., Ltd.

Introduction

Name : ZL-8002B Desktop computer type servo tensile testing machine



Tel: [+86-769-3365 7986](tel:+86-769-33657986)

Website: www.zltester.com

Address: [No.62, Xinhe Management of Area, Wanjiang District, Dongguan city, Guangdong province ,China](#)

Fax: [+86-769-3365 7987](tel:+86-769-33657987)

E-mail: Zhongli@zltester.com

**Equipment summary:**

ZL-8002B Desktop microcomputer-type tensile testing machine is designed by our company which is made of aluminum, it is not only small, used widely, do not take up space, nice appearance, but also easy to move with the hoop, it is very convenient to operate. It is controlled by computer and printing out the testing report; The outward appearance used the closing board dealing with high-level baking varnish, which obviously elegant appear. It especially suitable for controlling quality in production line, This series of machine is mainly applied to test the non-metallic and metallic materials which the load is less than 20KN.

Main functions:

This testing machine is applied to the flexible material in tension, tear, adhesive strength, peel (90 degrees and 180 degrees) and others, such as rubber, plastic, plastic film and others. It is equipped with extensometer which special used to measure the deformation of specimen, it suitable to test the large deformation of material .

Main feature:

Adopted photoelectric encoder to measure the displacement, the controller uses the embedded single-chip microcomputer structure with multi-function software, which combined with measurement, control, calculation and storage. It can automatic calculate the stress, rate of elongation (need to add with extensometers), tensile strength, elastic modulus, automated statistical results; automatically recorded the biggest point, breaking point, the designated point value or the rate of elongation; Using computer to display the dynamic curves in the testing process and process the data, After testing, it can re-analysis and editing the data by amplifying the curves through the graphics processing module, printing reports, product performance reached the international advanced level.

corresponding standard :

《GB/T16491-1996 electronic universal testing machine》

Technical parameter:

Model	ZL-8002B
Max load	500N, 1KN, 2KN, 5KN
Accurate grade	1grade /0.5 grade
Effective measuring range	0.2%~100% (1grade) /0.4%~100% (0.5 grade)

Tel: [+86-769-3365 7986](tel:+86-769-33657986)

Fax: [+86-769-3365 7987](tel:+86-769-33657987)

Website: www.zltester.com

E-mail: Zhongli@zltester.com

Address: No.62, Xinhe Management of Area, Wanjiang District, Dongguan city, Guangdong province, China



Measuring accuracy	the value $\pm 1\%$ / the value $\pm 0.5\%$
Tester resolution	Max load 1/200000, constant the resolution
Load sensor	Basic configuration: sensor (max load) : one Extended configuration: can add more sensors
Effective testing width	300mm (can be widened according to customer's requirement)
Effective tensile stroke	800mm;1000mm;1200mm (can be increased the height according to customer's requirement)
Range of testing speed	0.001~500mm/min
Accuracy of displacement measurement	Tolerance: $\pm 0.5\%$ / tolerance: $\pm 0.2\%$
Deformation of measured system (according to the requirements)	Min span :10mm, Max range of deformation : 800mm Extended deformation : Min span: 25mm、50mm、100mm, range of deformation : 5mm、10mm、25mm
Accuracy of measured deformation	Tolerance : $\pm 0.5\%$ (according to requirement of customer to choose the larger or small deformation)
safety	Electronic-limit protection
Testing platform moving device	Fast /slow two speeds to control, can jog
Return back	Manual or automatic operation、 After the test, the moving iron return to initial position with the highest speed by manual or automatic operation
Overload protection	Overload 10%, automatic protection
fixture	A set of tensile fixture
Machine size	65x36x210cm(length*width*height) (including the height of operative table)
Power system	Panasonic AC Servo Motor + Driver + high-precision ball screw
Power supply	220V、50HZ、
Power	0. 2KW (depending on different demand of force, using different motor)
Machine weight	(about) 160 KG
Units	KG, N, LB, TON, can be exchanged.

Software features:

1.The software description about Desktop computer type servo tensile testing machine

A. function of standard modular: provide users with the necessary applications to the test, covering GB,

Tel: [+86-769-3365 7986](tel:+86-769-33657986)

Fax: [+86-769-3365 7987](tel:+86-769-33657987)

Website: www.zltester.com

E-mail: Zhongli@zltester.com

Address: No.62, Xinhe Management of Area, Wanjiang District, Dongguan city, Guangdong province ,China



ASTM, DIN, JIS, BS ... and other testing standard specification.

- B. tested product information: provide users with the data to set about the products, one time to input and re-use permanently . for improving the accuracy, the data can be corrected by the formula automatically.
- C. Dual-Report Editor: provide users with the reported format that users choose (testing program add EXCEL reported format, Extend the previous single pattern of statements)
- D. the data's unit of length and force can be exchanged, unit of force is T, Kg, N, KN, g, lb, unit of length is mm, cm, inch.
- E. auto-optimization of graphic scale, display the best measurement of graphics. It can test the moving exchange in graphics. It has the load - displacement, load - time, displacement - time, stress - strain load -2 points extending maps, and lots of graph compared.
- F. Test results can be output in EXCEL format.
- G. testing result can be automatically preserved or manual preserved, after the test, it can automatically calculate the most strength, up and down yield strength, loop method, best method, non-proportional extended strength, tensile strength, compressive strength, tensile strength at any point, constant load extension, elastic modulus, rate of elongation, peel range of maximum force, minimum force, average force, total energy, bending modulus, x% load in break displacement, load X% in break displacement, and so on . the test data can be stored in any disk.
- H. Software has a capability that can output the before data.

2. The accessories about Desktop computer type servo tensile testing machine

- A. warranted book within one-year and operating instructions.
- B. a group of fixture
- C. testing software for tensile machine.
- D. a set of brand computer, color printer

3. items can be tested in the Desktop computer type servo tensile testing machine

Common items: (display data and calculation)

- tensile stress
- tensile strength
- fixed stress
- stress strength
- the value of force at any point
- pull-out strength
- tensile strength
- rate of elongation at break
- rate of stress at break
- tear strength
- rate of elongation at any point
- force of adhesion and the peak of force

Tel: [+86-769-3365 7986](tel:+86-769-33657986)

Website: www.zltester.com

Address: [No.62, Xinhe Management of Area, Wanjiang District, Dongguan city, Guangdong province ,China](#)

Fax: [+86-769-3365 7987](tel:+86-769-33657987)

E-mail: Zhongli@zltester.com

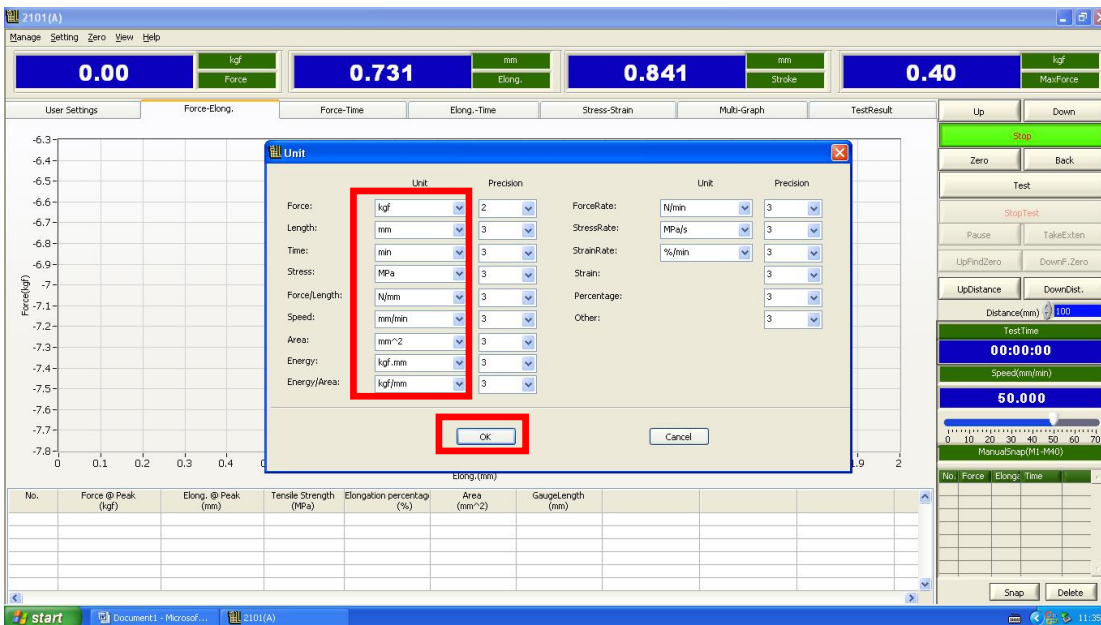


4. Computer servo control material testing machine software operation interface

1. Choose you need units, setting==>unit



2. There are so many unit, just choose you need.



3. Connect computer and software online. Setting==>Online==>COM1 or COM2..., after it shows

Tel: [+86-769-3365 7986](tel:+86-769-33657986)

Website: www.zltester.com

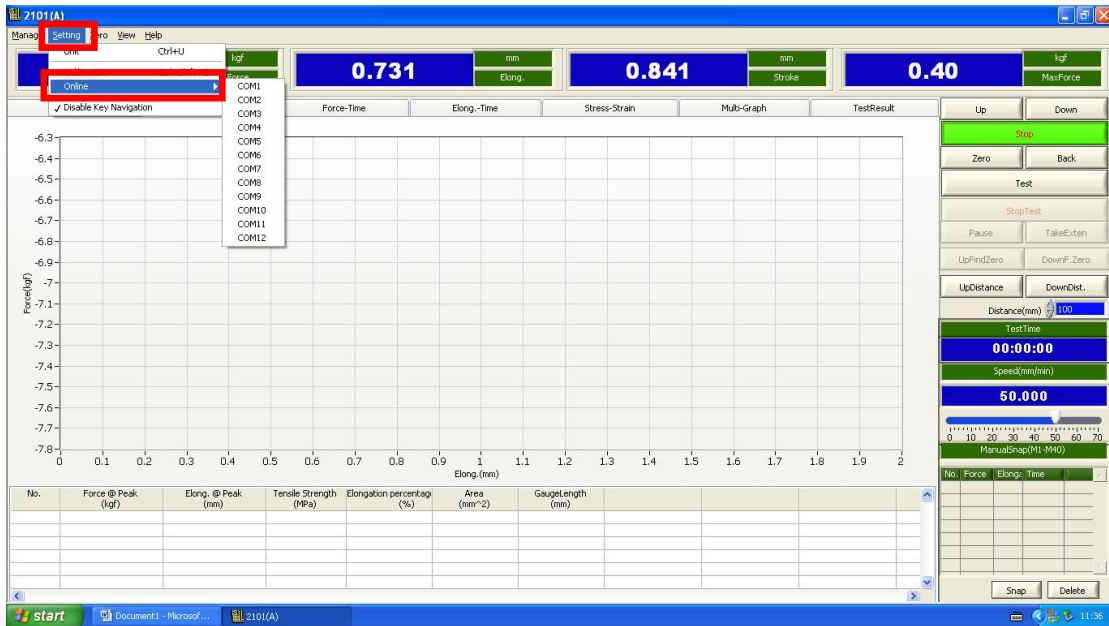
Address: No.62, Xinhe Management of Area, Wanjiang District, Dongguan city, Guangdong province ,China

Fax: [+86-769-3365 7987](tel:+86-769-33657987)

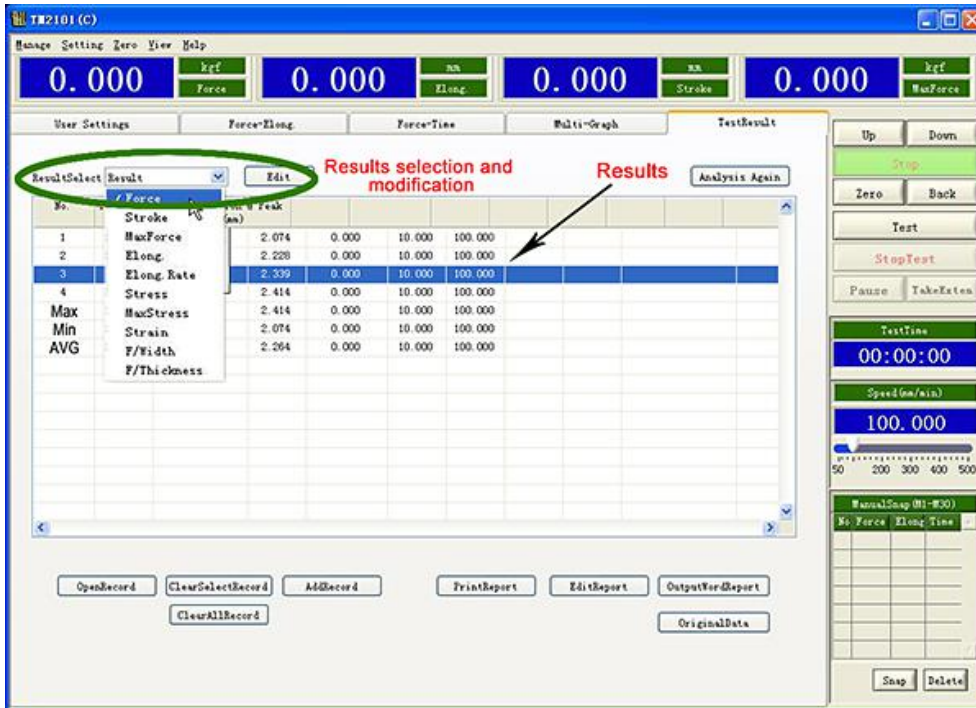
E-mail: Zhongli@zltester.com



success connection.



5. Test results



6. Computer servo control material testing machine test curve

Tel: +86-769-3365 7986

Fax: +86-769-3365 7987

Website: www.zltester.com

E-mail: Zhongli@zltester.com

Address: No.62, Xinhe Management of Area, Wanjiang District, Dongguan city, Guangdong province ,China



东莞中力仪器科技有限公司

ZhngLi Instrument Technology Co., Ltd.



Tel: +86-769-3365 7986

Fax: +86-769-3365 7987

Website: www.zltester.com

E-mail: Zhongli@zltester.com

Address: No.62, Xinhe Management of Area, Wanjiang District, Dongguan city, Guangdong province ,China